

GROUP: \_\_\_\_\_

## EXPERIMENT ONE

**Is the weather cold enough to keep a Freezie frozen?**  
Check when you return from a walk

\_\_\_\_\_

Answer

## EXPERIMENT TWO

**What is the temperature of your water sample before your walk?**

\_\_\_\_\_

Answer

**What is the temperature of your water sample after your walk?**

\_\_\_\_\_

Answer

**Why has the temperature changed?**

\_\_\_\_\_

\_\_\_\_\_

\_\_\_\_\_

Answer

## RECORD THESE TEMPERATURES

**In your workroom**  
(in degrees Celcius)

\_\_\_\_\_

**Under a log**  
(in degrees Celcius)

\_\_\_\_\_

**Under your hat**  
(in degrees Celcius)

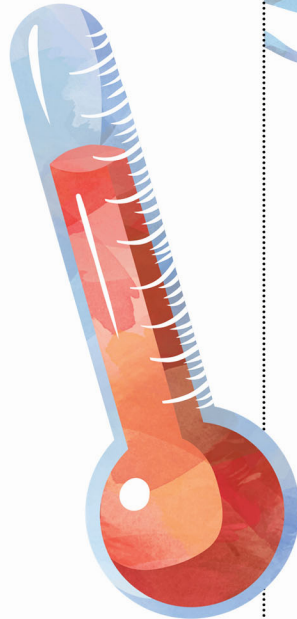
\_\_\_\_\_

**Inside a shelter**  
(in degrees Celcius)

\_\_\_\_\_

**Under ground temperature**  
(in degrees Celcius)

\_\_\_\_\_



**What is the percentage of cloud cover today?**

\_\_\_\_\_

**Why do some creatures sleep under the forest leaves?**

\_\_\_\_\_

\_\_\_\_\_

**What do spring birds eat?**

\_\_\_\_\_

**How long is an earthworm?**

\_\_\_\_\_