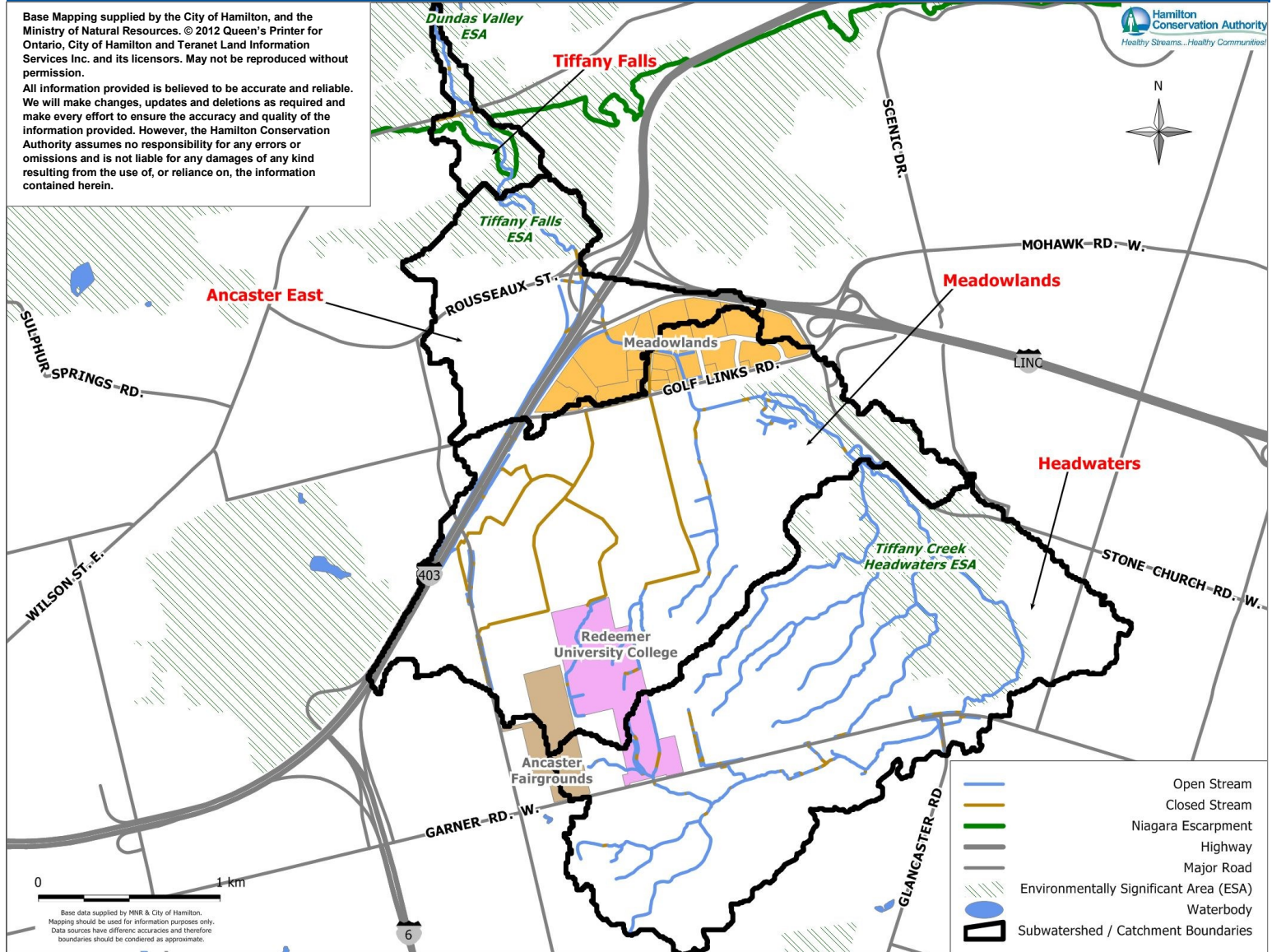


TIFFANY CREEK SUBWATERSHED

Base Mapping supplied by the City of Hamilton, and the Ministry of Natural Resources. © 2012 Queen's Printer for Ontario, City of Hamilton and Teranet Land Information Services Inc. and its licensors. May not be reproduced without permission.

All information provided is believed to be accurate and reliable. We will make changes, updates and deletions as required and make every effort to ensure the accuracy and quality of the information provided. However, the Hamilton Conservation Authority assumes no responsibility for any errors or omissions and is not liable for any damages of any kind resulting from the use of, or reliance on, the information contained herein.

Hamilton Conservation Authority
Healthy Streams...Healthy Communities!



The Tiffany Creek subwatershed is 9.3 km² in area and part of the Spencer Creek watershed. The headwaters of Tiffany Creek begin east of Southcote Road, flow northeast towards Stone Church Road, then flow northwest and over Tiffany Falls at the escarpment brow out letting into Ancaster Creek. Although Tiffany Creek appears to have remained for the most part natural, stream system alterations have been undertaken in order to accommodate for the residential and commercial development in the area.

Tiffany Creek subwatershed in comparison to Environment Canada's 'How much Habitat is Enough' Guidelines

Landscape Feature	Guideline	Subwatershed Status
Wetland	6%	5.4%
Forest	30%	11.8%
Impervious Surface	<10%	34%

Three designated Environmental Significant Areas (ESA's) are located within this subwatershed: Tiffany Creek Headwaters, Tiffany Falls, and Dundas Valley. These natural areas act as major ecological corridors for terrestrial species and maintain water quality and quantity within the stream reaches that pass through these areas, to the benefit of aquatic species.

Notable species that have been located in this subwatershed include: American Chestnut, Broad Beech Fern, Cerulean Warbler, and Eastern Milksnake.

The top two environmental stresses in the Tiffany Creek subwatershed, as identified within the Spencer Creek Stewardship Action Plans, are:

- **Insufficient riparian buffers (recommended width of 30 metres for coldwater systems) along creeks, and**
- **The degradation of terrestrial habitats.**

What are we doing to protect the coldwater habitat and health of the Tiffany Creek subwatershed?

The Hamilton Conservation Authority's (HCA) Aquatic Resource Monitoring Program has a station in Tiffany Creek that is monitored in year two of a three year cycle. The program collects information on fish, fish habitat and benthic invertebrates to assess and track changes in the health of the aquatic ecosystem.

The Hamilton Watershed Stewardship Program works with the public and private property owners to develop and implement initiatives and restoration projects that create and enhance natural areas and habitats in the HCA watershed. The program offers free on-site consultation to private property owners who have natural features on their properties. Property owners that undertake restoration projects that create or enhance natural habitats or water quality may be eligible to apply for financial assistance.

What can landowners do to restore and protect the cold water habitat and health of Tiffany Creek?

1. Re-establish riparian buffers where there are none.
2. Increase the width of existing riparian buffers.
3. Plant native trees, shrubs and herbaceous plants in front, rear and side yards.
4. Disconnect downspouts that direct water from roofs and eavestroughs to the storm sewer system and direct them to yards and gardens.
5. Collect rain water in rain barrels to use the water on gardens.



Riparian Buffer along Both Sides of the Creek

Sources: Hamilton Conservation Authority (HCA) 2008. Tiffany Creek Subwatershed Stewardship Action Plan and the Canada-Ontario Environmental Farm Plan, Fourth Edition Workbook, 2013.



**Hamilton Watershed Stewardship Program
c/o Hamilton Conservation Authority
P.O. Box 81067, 838 Mineral Springs Road
Ancaster, Ontario L9G 4X1
www.hamiltonhaltonstewardship.ca
Office: (905) 525-2181, Ext. 181, 196**

**Are you interested in
information about how you
can protect water quality and
habitat on your property?**

**Call to arrange a free on-site
consultation!**