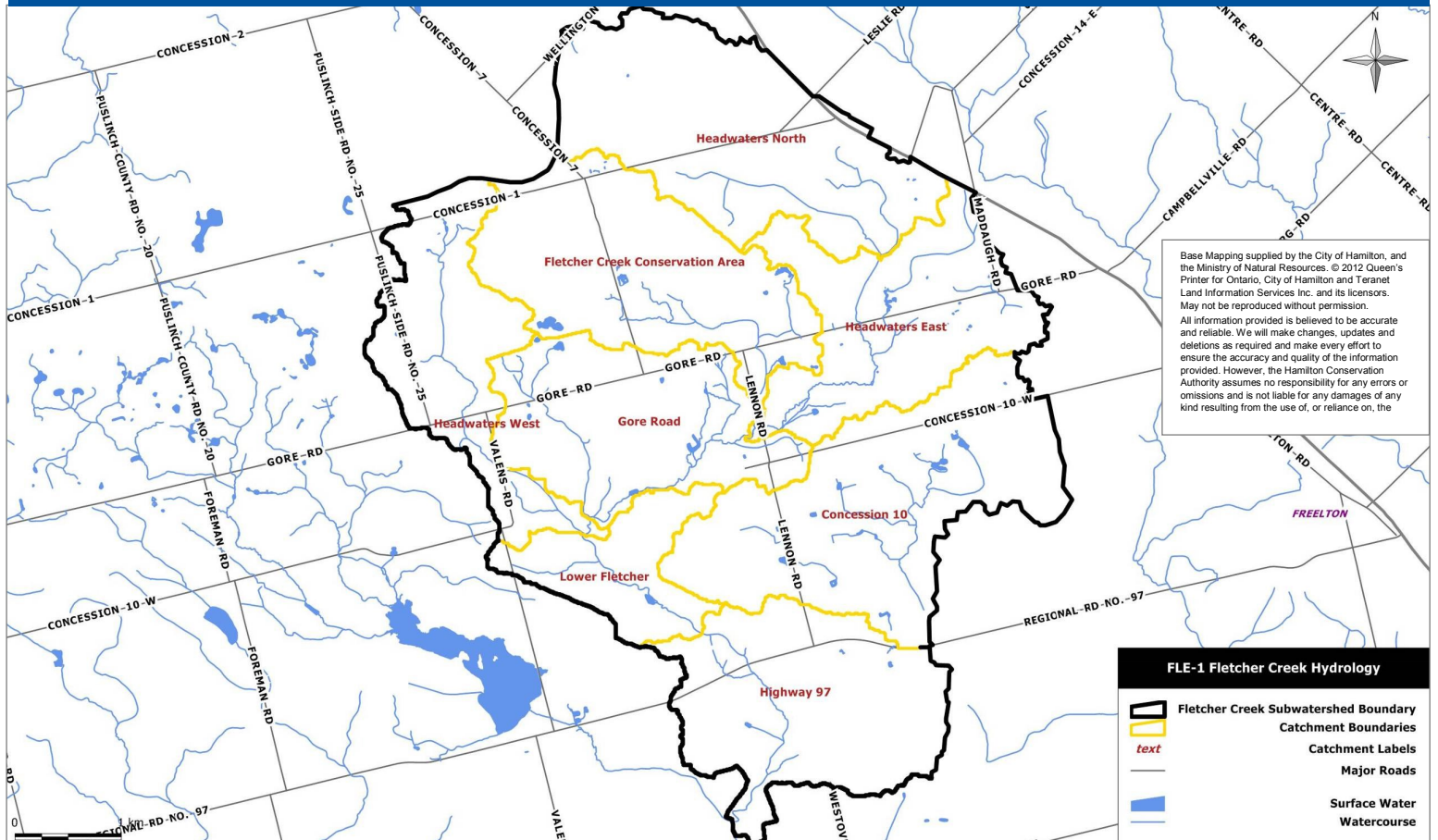


FLETCHER CREEK SUBWATERSHED



The Fletcher Creek subwatershed is part of the Spencer Creek watershed and the majority of the subwatershed lies within the former municipal boundary of Flamborough within the City of Hamilton. The cold headwaters of Fletcher Creek lie within Wellington County and drain the southern edge of the Galt Moraine. Few settlers came into the area before 1810 and settlement was slower than in other townships due to its lack of early roads. Furthermore, much of its land was undesirable because it was swampy or it had rock lying close to the surface.

Fletcher Creek has one of the highest ground surface elevations of all the subwatersheds of Spencer Creek. The cold headwaters of Fletcher Creek drain the southern edge of the Galt Moraine.

Fletcher Creek subwatershed in comparison to Environment Canada's 'How much Habitat is Enough' Guidelines

Landscape Feature	Guideline	Subwatershed Status
Wetland	6%	31.2%
Streambanks Naturally Vegetated	75%	46.7%
Forest	30%	43%
Impervious Surface	<10%	0%

Fletcher Creek is a high quality coldwater stream. The excellent water quality can be attributed to the large amounts of swamp land in the subwatershed. Brook Trout and Mottled Sculpin are two species that have been recorded in the creek. The combined length of Fletcher Creek and its tributaries is 50.2 km.



Canada Warbler

Two top stresses in Fletcher Creek subwatershed identified in the Spencer Creek Stewardship Action Plans:

- **Insufficient Riparian Buffers (natural vegetation along streambanks)**
- **On-line Ponds (ponds in creeks which limit fish movement throughout the creek)**

What are we doing to protect the coldwater habitat and health of the Fletcher Creek subwatershed?

The Hamilton Conservation Authority's (HCA) Aquatic Resource Monitoring Program has three stations in the Fletcher Creek subwatershed which are monitored in year one of a three year cycle. The program collects information on fish, fish habitat and benthic invertebrates to assess and track changes in the health of the aquatic ecosystem.

The Hamilton Watershed Stewardship Program works with the public and private property owners to develop and implement initiatives and restoration projects that create and enhance natural areas and habitats in the HCA watershed. The program offers free on-site consultation to private property owners who have natural features on their properties. Property owners that undertake restoration projects that create or enhance natural habitats or water quality may be eligible to apply for financial assistance.

What can landowners do to restore and protect the cold water habitat and health of Fletcher Creek?

1. Re-establish riparian buffers where there are none.
2. Increase the width of existing riparian buffers.
3. Retire marginal farm land.
4. Implement soil best management practices to reduce water erosion, wind erosion, sheet or tillage erosion, rill or gully erosion.
5. Consult with a Stewardship Technician for ways to reduce the negative impacts on creeks caused by on-line ponds.



Fletcher Creek Ecological Preserve

Sources: Hamilton Conservation Authority. 2012. Fletcher Creek Subwatershed Stewardship Action Plan and the Canada-Ontario Environmental Farm Plan, Fourth Edition Workbook, 2013.



**Hamilton Watershed
Stewardship Program**

Hamilton Watershed Stewardship Program
c/o Hamilton Conservation Authority
P.O. Box 81067, 838 Mineral Springs Road
Ancaster, Ontario L9G 4X1
www.hamiltonhaltonstewardship.ca
Office: (905) 525-2181, ext. 181, 196

Are you interested in
information about how you
can protect water quality and
habitat on your property?

Call to arrange a free on-site
consultation!