



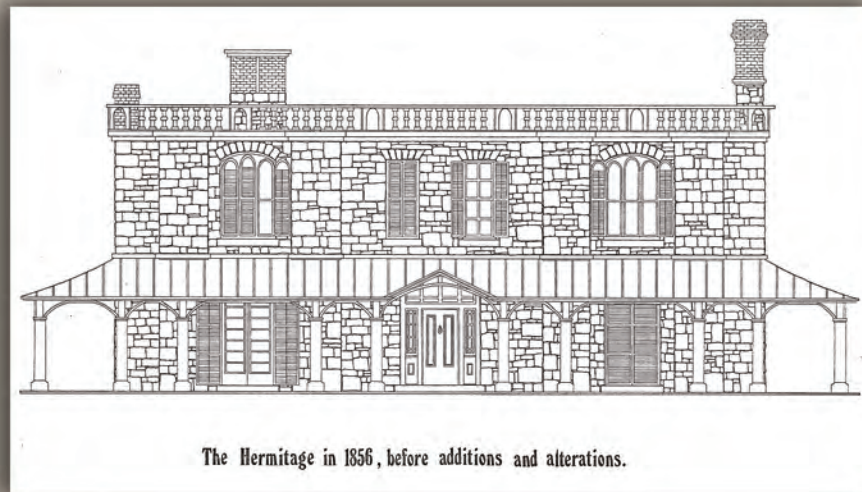
*D*rawing Room



*E*ntrance Hall 1915

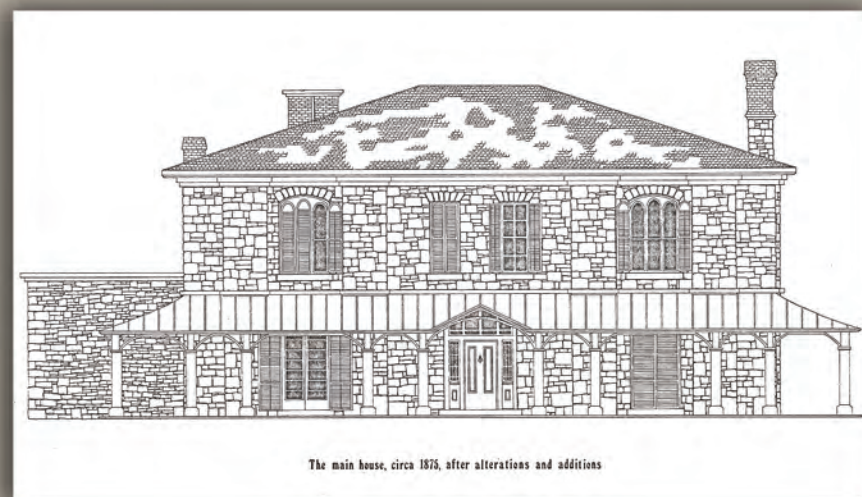


*D*ining Room



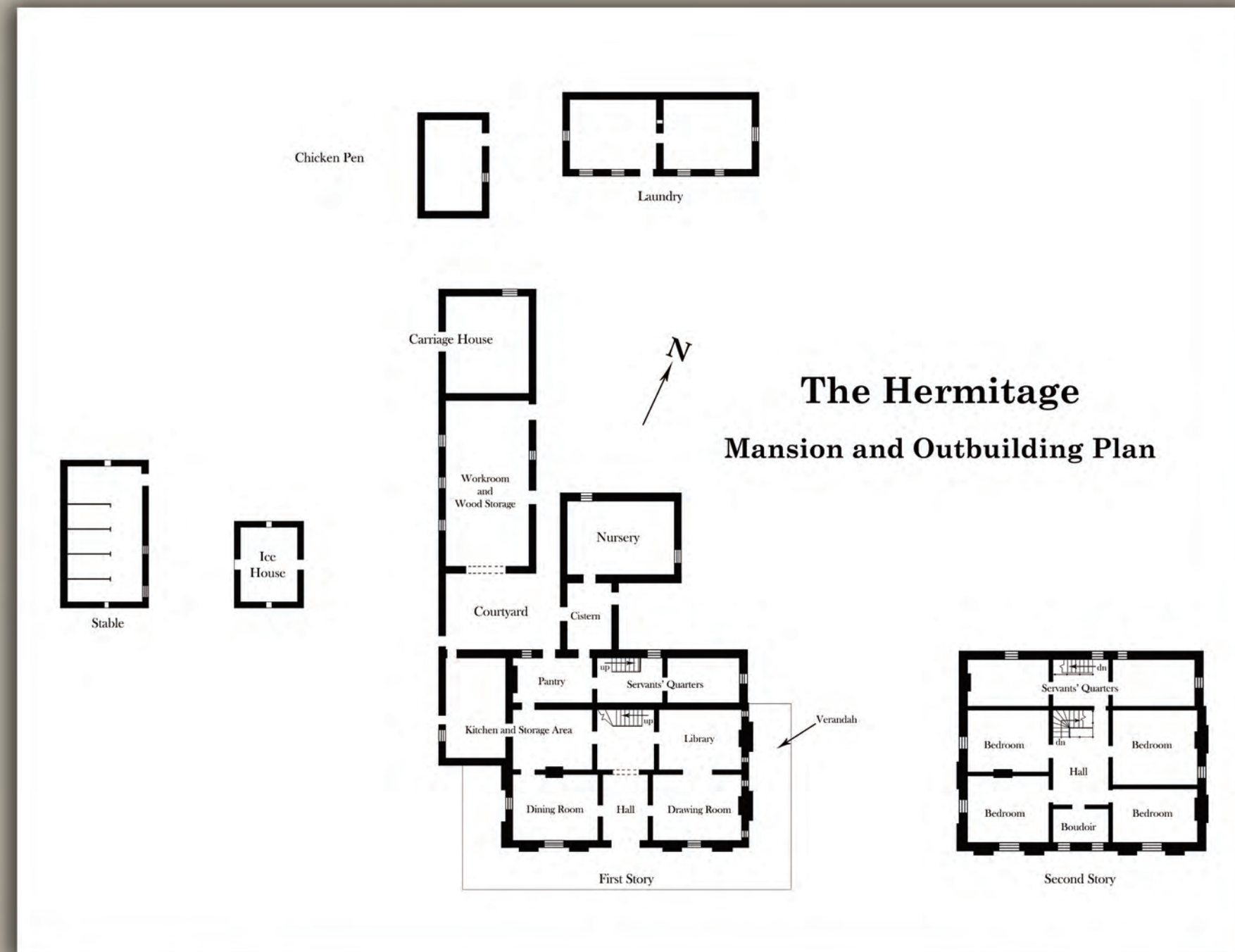
The Hermitage in 1856, before additions and alterations.

*E*xterior 1856



The main house, circa 1875, after alterations and additions

The Hermitage c. 1875
George Leith began the construction of the Hermitage mansion in 1855. It was built in stages, originally having a flat roof surrounded by a solid wooden rail.



Constructed of cut limestone, the interior of the main house was oriented to a central hall. The porch and 'French' windows were typical of the Regency Cottage Style.