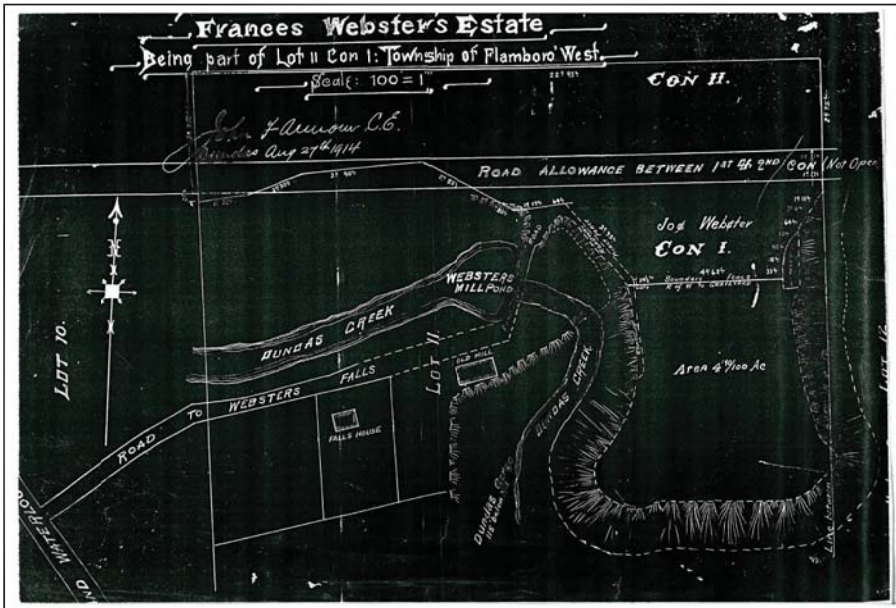


1800's - 1930's. . .some historical facts

- 1819 - Waterfall and 78 acres surrounding land purchased by Joseph Webster Sr.
- 1830 - Webster's son built a mill and operated a flour, grist and oatmeal mill.
- 1838 - Mill destroyed by fire.
- 1841 - William Bullock built a large grist mill and sawmill.
- 1850 - First steam plant on Spencer Creek installed.
- 1866 - Woolen machines installed to manufacture blankets and wool cloth.
- Harper built one of the first hydro-electric generators in Ontario at the base of the falls.
- 1901 - Fire destroyed the plant, but Harper sold his assets to the Cataract Power Co. of Hamilton.
- 1917 - Webster's Falls and its surrounding areas purchased by the Public Utilities Commission of Dundas.
- Dundas Mayor Colonel W. E. S. Knowles bequeathed to the Town for the area to be made into a public park known as Webster's Falls Park.
- 1933 - Grounds were landscaped, a cobble-stone bridge was constructed across the creek above the falls and an iron fence was installed to make viewing from the edge safer.



- 1938 - Severe flood carried away a great part of the foundation of the Bullock mill and the mill and machinery moved to Dundas.

1960's. . .plans for Spencer Gorge

- 1966 - Spencer Gorge was acquired by the Hamilton Region Conservation Authority.
- 1967 - Spencer Gorge Wilderness Area Preliminary Designs and Calculations were created.
- Tew's Falls Conservation Area and Development Plan prepared:

